



# GANNET.LV

Techrider

<b>VENUERIDER</b>	<b>3</b>
<b>GET IN</b>	<b>3</b>
<b>TECHNICIANS</b>	<b>3</b>
<b>DIMENSIONS &amp; CONSTRUCTION</b>	<b>3</b>
<b>VENUE</b>	<b>4</b>
<b>AUDIO</b>	<b>4</b>
<b>LIGHTS</b>	<b>6</b>
<b>DMX PATCH LIST</b>	<b>7</b>
<b>BACKLINE (ON DEMAND)</b>	<b>7</b>
<b>VARIOUS</b>	<b>7</b>
<b>NIGHTLINER</b>	<b>7</b>
<b>GROUNDPLAN AUDIO</b>	<b>8</b>
<b>GROUNDPLAN LIGHT</b>	<b>9</b>
<b>IMPRESSIONS</b>	<b>10</b>

## Venuerider

This technical paper has 12 pages.

## Get In

For artist & crew not earlier than 4 hours before doors! Exceptions only with permission of the house production!

## Technicians

If you have further questions, don't hesitate to contact us:

**Kaspar Hochuli:**

**e-mail: [technik@gannet.lv](mailto:technik@gannet.lv)**

**phone: +41 79 307 08 45**

**Tom Brunner:**

**e-mail: [tom.brunner@gannet.lv](mailto:tom.brunner@gannet.lv)**

**phone: +41 76 566 66 55**

## DIMENSIONS & CONSTRUCTION

### STAGE

Our stage has three different levels. Regarding this, there are numerous options to perform and the stage is suitable for small and big productions.

<b>Ground level: ca. 27m<sup>2</sup></b>	<b>Middle level: ca. 21m<sup>2</sup></b>	<b>Upper level: ca. 8m<sup>2</sup></b>
<b>Stage width: 7,3m</b>	<b>Stage width: 5,1m</b>	<b>Stage width: 5,1m</b>
<b>Stage depth: 3,7m</b>	<b>Stage depth: 5,3m</b>	<b>Stage depth: 1,6m</b>
<b>Headroom: 2,3m</b>	<b>Headroom: 1,9m</b>	<b>Headroom: 1,7m</b>

**Audience: ca. 86m<sup>2</sup>**

**Width: 6,8m**

**Depth: 12,7m**

**Headroom: 3,3m**

## Venue

### BACKSTAGE

- Backstage:**
- 1 directly behind the stage (30m<sup>2</sup>), separate toilet
  - 1 fully equipped trailer 50m away with toilet, shower, kitchen, 2 beds

### LOADING

- Information:**
- There are two entrances to the club (car-/stage-distance approx. 20 meters):
    - one with a pebbled path
    - one with a stair with 6 steps

### FURNISHING

- Chairs:** - 200 to rent for 2.- CHF per chair
- Tables:**
- 15 bistro tables
  - 15 buffet tables

## AUDIO

### SWISS LAW REGARDING LOUDNESS

**Please note: according to a strict swiss law regarding the loudness, it's not allowed that a band exceed leq 100 db(a) over 60 minutes and the tops should never exceed the limit of 125 db(a) at any time. Thank you in advance for your cooperation!**

### PA-SYSTEM

<b>Speakers front</b>	<b>Tops: d&amp;b audio Vi10P</b>	<b>2x</b>
	<b>Subs: d&amp;b audio G-sub</b>	<b>4x</b>
	<b>Infra: kling &amp; freitag nomos xlc</b>	<b>2x</b>
<b>Delay line</b>	<b>d&amp;b audio y10</b>	<b>4x</b>
<b>Amps</b>	<b>d&amp;b audio 40d</b>	<b>1x</b>
	<b>d&amp;b audio d80</b>	<b>1x</b>
	<b>LAB.Gruppen FP14'000</b>	

### MONITORING

<b>Speakers</b>	<b>kling &amp; freitag CA1001 passiv</b>	<b>6x</b>
	<b>kling &amp; freitag CA1001 aktiv</b>	<b>2x</b>
<b>Amps</b>	<b>LAB.Gruppen</b>	

## FRONT OF HOUSE

<b>Desk</b>	<b>Waves LV1 (Faderbank, 2x Touchscreen) Extreme Server DSPRO StageGrid 1000</b>	
<b>Stagebox</b>	<b>DSPRO StageGrid 4000 (32 in, 16 out, 4 AES/EBU)</b>	
<b>Cables</b>	<b>Cat7 Ethercon (FOH to stage)</b>	<b>4x</b>

## MICROPHONES / DIS

<b>Wireless mics</b>	<b>tba</b>
<b>Wired mics</b>	<b>tba</b>
<b>Di boxes</b>	<b>tba</b>

## DJING

<b>Dj mixers</b>	<b>Pioneer DJM-1000</b>	<b>2x</b>
	<b>Pioneer DJM-850</b>	<b>1x</b>
	<b>Pioneer DJM-700</b>	<b>1x</b>
<b>Cd players</b>	<b>Pioneer CDJ-2000</b>	<b>3x</b>
	<b>Pioneer CDJ-3000</b>	<b>2x</b>
<b>Turntables</b>	<b>Technics MK-V</b>	<b>2x</b>
	<b>Technics MK-II</b>	<b>4x</b>

## POWER

<b>Backline power (on stage)</b>	<b>CEE 63/32/16 T25/T23</b>	
<b>Powerboards</b>	<b>Schuko/CH Adapters (CH/Schuko)</b>	

## MOBILE PA`s

<b>Tops</b>	<b>d&amp;b audio 12s</b>	<b>2x</b>
<b>Subs</b>	<b>d&amp;b audio 27s</b>	<b>2x</b>
<b>Amps</b>	<b>d&amp;b audio D9</b>	<b>2x</b>

## LIGHTS

<b>Desk</b>	<b>Infinity Chimp 100.G2</b>	
<b>Front</b>	<b>G-1 Beam, IP-65 Beam MovingHead (2.8°) 14 Farben, 19 Gobos, Fokus</b>	<b>4x</b>
	<b>GLP Volkslicht mit 60 Luseon Regel High Power LED's RGB (18xRot, 21xGrün, 21xBlau)</b>	<b>4x</b>
	<b>FresneLED Compact 100 Watt, DMX, Flügelator</b>	<b>6x</b>
<b>Stage</b>	<b>Showtec Vintage Blaze '33 Halo 300W + RGB LED</b>	<b>2x</b>
	<b>Showtec Spectral M800 Q4 Tour (Backlight)</b>	<b>4x</b>
	<b>Showtec Spectral M800 Q4 Tour (mobil)</b>	<b>4x</b>
<b>Dancefloor</b>	<b>Showtec Vintage Blaze '55 Halo 500W + RGB LED</b>	<b>6x</b>
	<b>Mirrorball</b>	<b>1x</b>

## DMX PATCH LIST

To be delivered

## BACKLINE

On demand

## VARIOUS

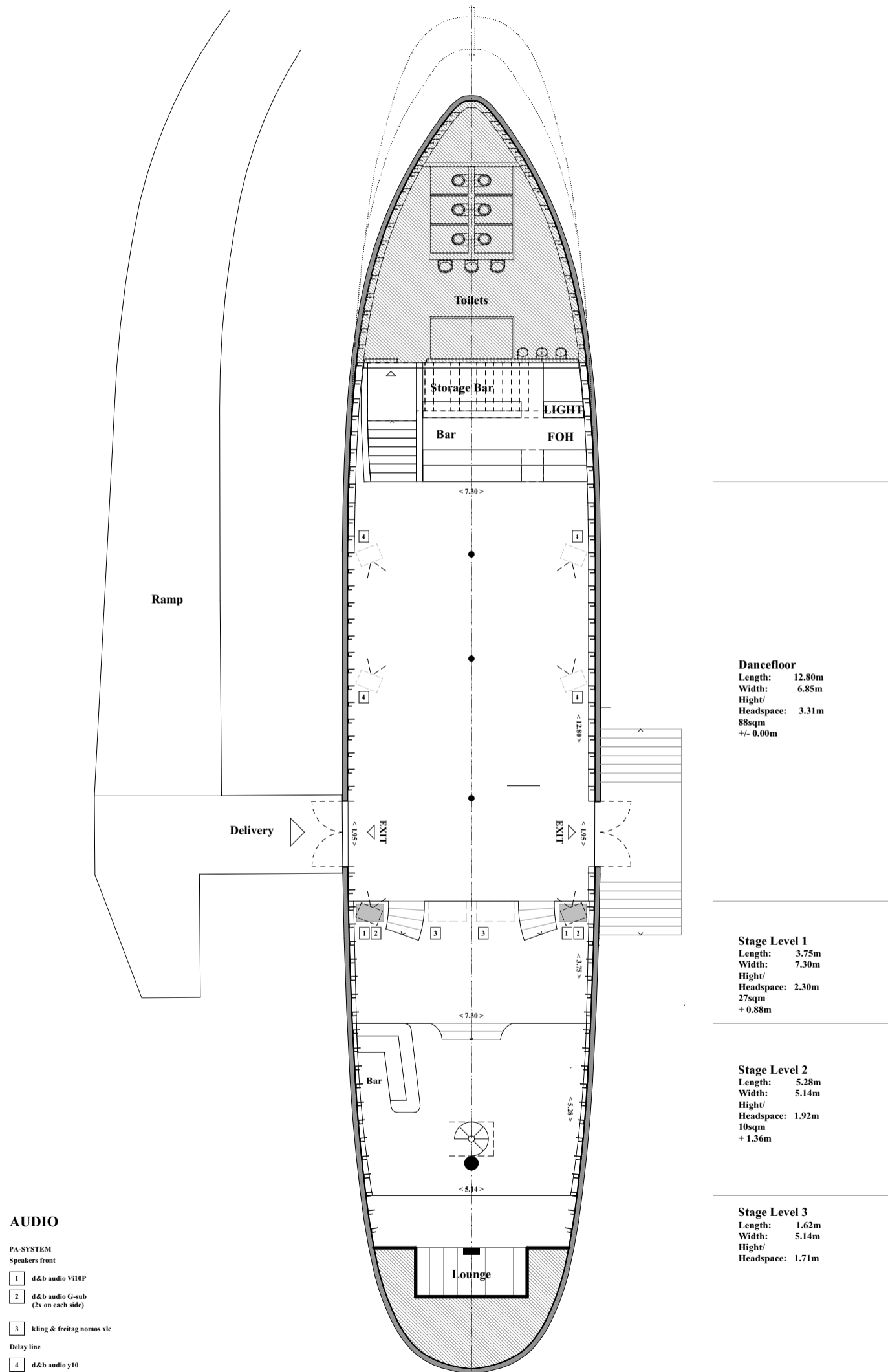
Bütec	1mx2m (40 cm)	4x
	1mx1m (40 cm)	4x

## NIGHTLINER

Parking Lot Nightliner	2x
CEE63 (Adapter: CEE32/16/T25/T23/T13/Schuko)	

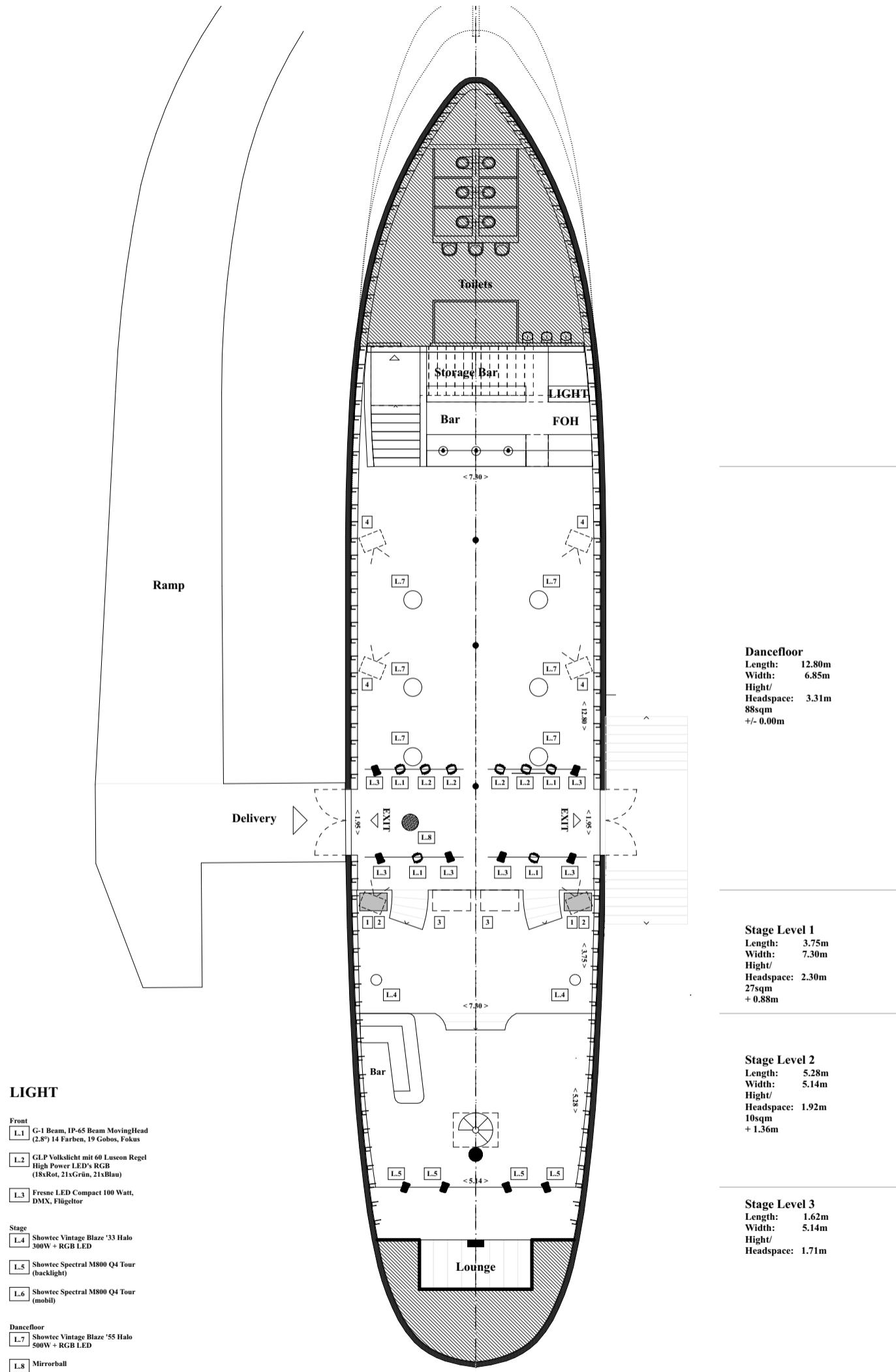
## Ground Plan

### Audio



## Ground Plan

## Light



## Impressions

