

# EVENT PACKAGE

HILTON GARDEN INN ZURICH LIMMATTAL



Hilton Garden Inn Zurich Limmattal  
Limmig Restaurant | Bar & Cigar Lounge  
Kreuzaeckerstrasse 5  
CH-8957 Spreitenbach - Switzerland  
+41 (0)56 404 40 40 | [zrhsp-salesadm@hilton.com](mailto:zrhsp-salesadm@hilton.com) | [zurichlimmattal.hgi.com](http://zurichlimmattal.hgi.com)

# DAILY DELEGATE RATES

AVAILABLE FOR ORDER FROM 8 PERSONS

	"LET'S MEET"		"ON TOP"		"SMOOTH"	
	½ Day	Whole day	½ Day	Whole day	½ Day	Whole day
Welcome coffee with croissant		✓	✓	✓	✓	✓
Meeting Room Rental	✓	✓	✓	✓	✓	✓
Technics	✓	✓	✓	✓	✓	✓
Parking	CHF 1.50/ Hour					
Mineralwasser à discrétion	✓	✓	✓	✓	✓	✓
1. Coffeebreak with Snacks, Bakeries, Coffee Chicco D'oro, Tea und Juice	✓	✓	✓	✓	✓	✓
Fruitbasket			✓	✓	✓	✓
2-Courses Lunch incl. Mineralwater	✓	✓	✓	✓		
3-Courses Lunch incl. Mineralwater, Softdrinks und Wine					✓	✓
2. Coffeebreak with Snacks, Bakeries, Coffee Chicco D'oro, Tea und Juice				✓		✓
<b>Price in CHF/ Person / Day</b>	<b>89.00</b>	<b>109.00</b>	<b>99.00</b>	<b>119.00</b>	<b>119.00</b>	<b>139.00</b>

All prices including VAT.

# SEMINAR CATERING

## A LA CARTE

Mineral water still / sparkling	0,8 l	CHF 9.00
Soft drinks	0,33 l	CHF 6.00
Coffee / tea	cup	CHF 5.50

## COFFEE BREAKS

Welcome coffee without Croissants, including Chicco D' Oro coffee & tea selection per person **CHF 10.00**

Welcome coffee with Croissants, including Chicco D' Oro coffee & tea selection per person **CHF 15.00**

Coffee break AM / PM including choice of various snacks and pastries as per choice of the chef, Chicco D'Oro coffee & tea selection, mineral water, juices per person **CHF 25.00**



All prices including VAT.

# SEMINAR CATERING

## LUNCH / DINNER

a la carte

according to the current menu and  
after consumption

2-course menu

from CHF 39.00 / Person

3-course-menu

from CHF 55.00 / Person

4-course-menu

from CHF 65.00 / Person

5-course-menu

from CHF 79.00 / Person

Buffet (starting from 40 pax)

from CHF 55.00 / Person

## DRINKS RECEPTION

Reception Drinks – always inclusive of prosecco, red and white wine at hotel's choice, beer, water, soft drinks, coffee and tea

1 hour

from CHF 25.00 / Person

2 hours

from CHF 48.00 / Person

3 hours

from CHF 65.00 / Person

Drinks packages under 1 hour are charged on consumption basis. Please ask us for suggestions.

## APÉRO

Apéro Häppli - Reception food package at chef's choice:

Apéro Snacks Silver: 3 Snacks

from CHF 15.50 / Person

Apéro Snacks Gold: 6 Snacks

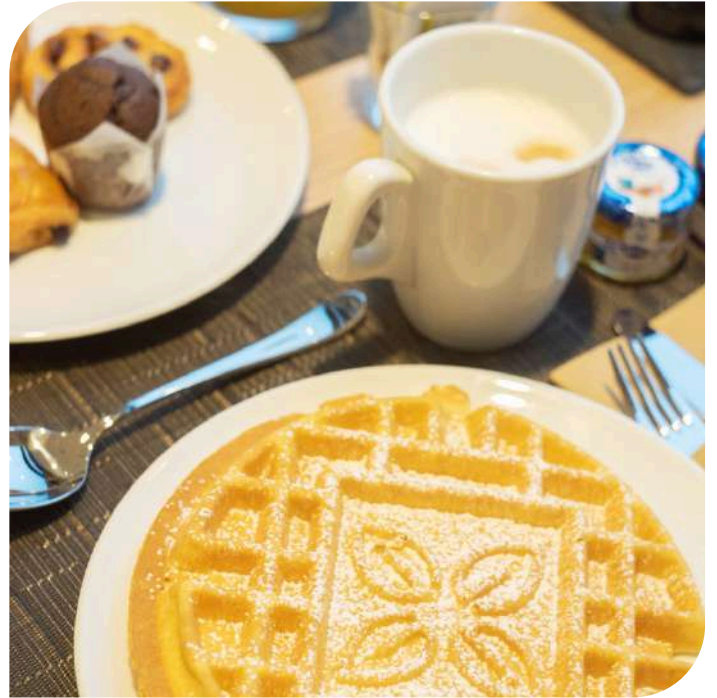
from CHF 32.00 / Person

Apéro Snacks Diamond: 9 Snacks

from CHF 49.00 / Person



All prices including VAT.



# MEETING ROOM RENTAL

## FROM 1 H

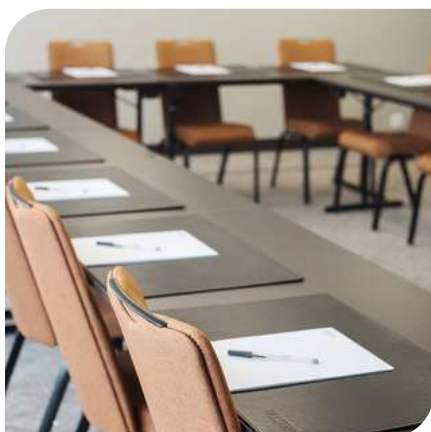
ROOM NAME	WHOLE DAY	HALF DAY	RENTAL / HOUR
Foyer	On request		
Garten Terrasse	On request		
Limmat I	1'000.00	700.00	100.00
Limmat II	1'000.00	700.00	100.00
Limmat III	1'000.00	700.00	100.00
Limmat IV	1'000.00	700.00	100.00
Limmat I + II	2'000.00	1'400.00	200.00
Limmat I + II + III	3'000.00	2'100.00	300.00
Limmat I + II + III + IV	4'000.00	2'800.00	400.00
Limmat II + III	2'000.00	1'400.00	200.00
Limmat II + III + IV	3'000.00	2'100.00	300.00
Limmat III + IV	2'000.00	1'400.00	200.00
Aare I	500.00	350.00	50.00
Aare II (Boardroom)	300.00	210.00	30.00
Aare I + II	800.00	560.00	80.00
Business Center	On request		
Foyer First Floor	On request		
Reuss (Boardroom)	300.00	210.00	30.00
Surb (Boardroom)	300.00	210.00	30.00
Sissle	500.00	350.00	50.00
Rhein	500.00	350.00	50.00
Wigger I	500.00	350.00	50.00
Wigger II (Boardroom)	300.00	210.00	30.00
Wigger I+II	800.00	800.00	80.00

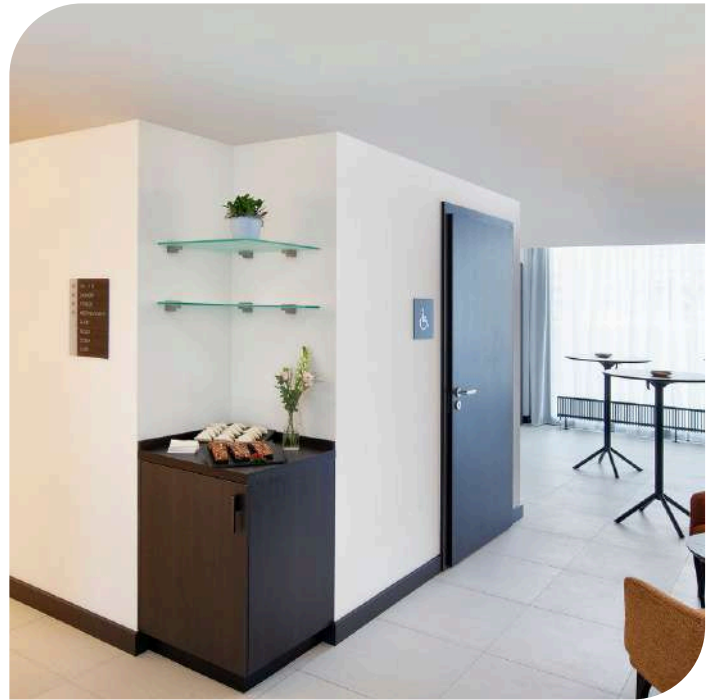
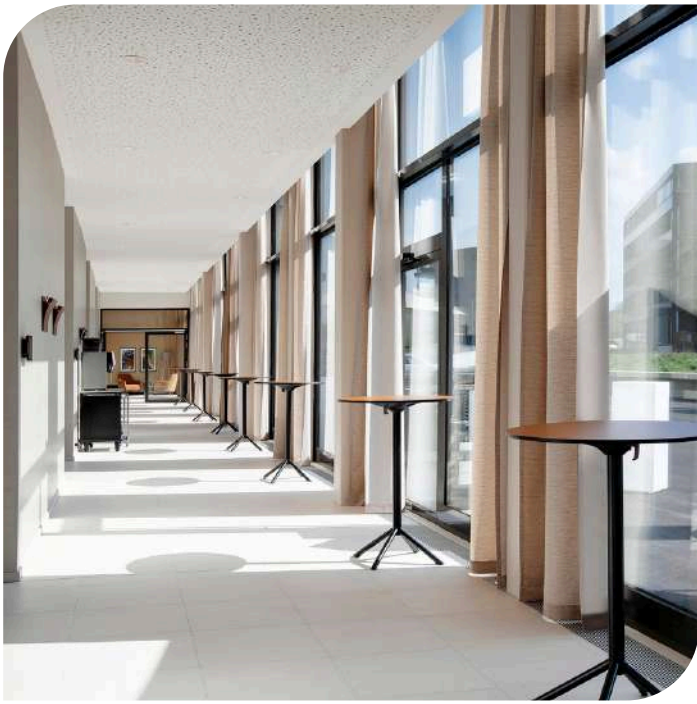
All prices are in CHF including VAT.

# MEETING ROOMS AND CAPACITIES



Room name	Floor	sq.m	U-shape	Classroom	Theatre	Boardroom	Banquet	Cocktail
Foyer	ground	160	-	-	-	-	-	200
Garten Terrasse	ground	700	-	-	-	-	-	300
Limmat I	ground	85	25	30	80	40	50	90
Limmat II	ground	93	25	30	80	40	50	90
Limmat III	ground	91	25	30	80	40	50	90
Limmat IV	ground	91	25	30	80	40	50	90
Limmat I + II	ground	178	50	80	160	-	120	180
Limmat I + II + III	ground	269	75	150	240	-	190	270
Limmat I + II + III + IV	ground	360	100	200	320	-	300	300+
Limmat II + III	ground	184	50	80	160	-	120	180
Limmat II + III + IV	ground	275	75	150	240	-	190	270
Limmat III + IV	ground	182	50	80	160	-	120	180
Aare I	ground	50	20	30	40	20	40	50
Aare II (Boardroom)	ground	25	-	12	20	10	10	20
Aare I + II	ground	75	30	45	60	30	60	80
Business Center	ground	10	-	-	-	-	-	-
Foyer First Floor	1st	68	-	-	-	-	-	40
Reuss (Boardroom)	1st	22	-	-	-	10	-	-
Surb (Boardroom)	1st	22	-	-	-	10	-	-
Sissle	1st	45	25	25	40	20	40	50
Rhein	1st	45	25	25	40	20	40	50
Wigger I	1st	50	20	30	40	20	40	50
Wigger II (Boardroom)	1st	25	-	-	20	10	10	20
Wigger I+II	1st	75	30	45	60	30	64	80





# FURTHER SERVICES

## DECORATION, EQUIPMENT RENTAL AND MORE

TECHNIC EXCLUDED FROM THE PACKAGE	CHF
Extra Flipchart	35.00
Extra magnetic board	35.00
Projector and screen	250.00
LCD TV	250.00
Microphone	100.00
Soundsystem	250.00
Extra moderation kit	20.00
Lectern	50.00
Laptop for guests (external)	250.00
Dancefloor / qm	10.00
Stage	150.00
Waste disposal costs	
1 kg rubbish	0.50
1 l foodwaste	1.80
Glass & Papier / Cardboard	on request

### Dekoration Partner

Laden und Showroom  
Luzernerstrasse 31  
CH-4665 Oftringen  
+41 (0)62 758 19 22

[info@hochzeitdekoration.ch](mailto:info@hochzeitdekoration.ch)  
[www.hochzeitdekoration.ch](http://www.hochzeitdekoration.ch)

### Blumen Partner

Blumen - Prinz GmbH  
Heimstrasse 8,  
CH-8953 Dietikon  
+41 (0)44 740 43 06

[info@blumenprinz.ch](mailto:info@blumenprinz.ch)  
[www.blumenprinz.ch](http://www.blumenprinz.ch)

### Blumen Partner

Blumen - Planet GmbH  
Wiesenstrasse 16  
8952 Schlieren  
+41 (0)44 731 99 22

[info@blumenplanet.ch](mailto:info@blumenplanet.ch)  
[www.blumenplanet.ch/shop](http://www.blumenplanet.ch/shop)

### Technik Partner

FLASHLIGHT EVENT- UND  
MEDIATECHNIK AG  
Pumpwerkstrasse 32  
CH-8105 Regensdorf  
+41 (0)44 843 44 44

[Info@flashlight.ch](mailto:Info@flashlight.ch)  
[www.flashlight.ch](http://www.flashlight.ch)

### Technik Partner

Encore  
Flughofstrasse 55  
CH-8152 Glattbrugg  
+41 (0)58 590 2650

[newbusiness-emea@encoreglobal.com](mailto:newbusiness-emea@encoreglobal.com)  
[www.encore-emea.com](http://www.encore-emea.com)

### Technik Partner

Bluetrac  
Motorenstrasse 2a  
CH-8623 Wetzikon  
+41 (0)44 931 12 12

[mail@bluetrac.ch](mailto:mail@bluetrac.ch)  
[www.bluetrac.ch](http://www.bluetrac.ch)

### Technik Partner

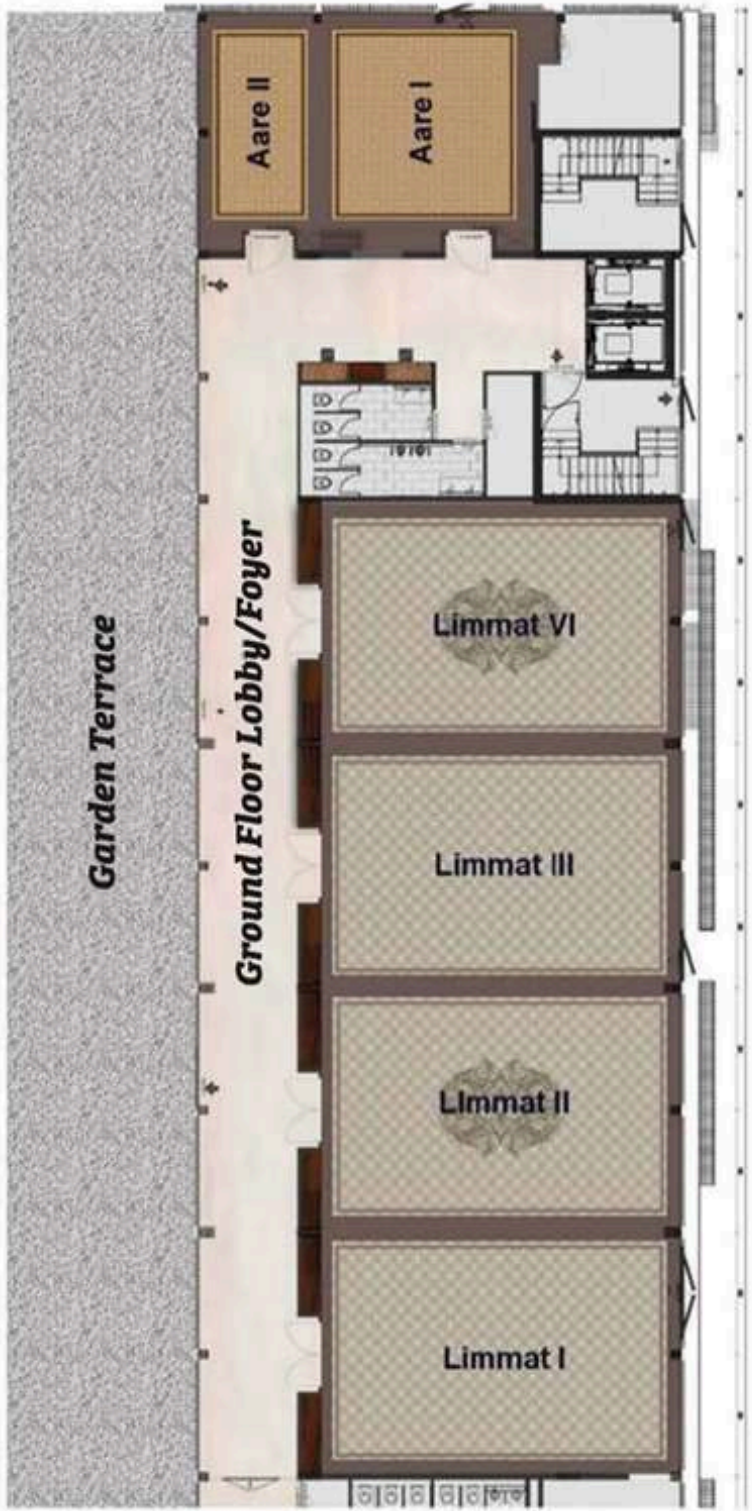
Licht und Ton AG  
Frauenfelderstrasse 6  
CH-8252 Schlatt  
+41 (0)52 659 50 00

[info@lichtundton.ch](mailto:info@lichtundton.ch)  
[www.lichtundton.ch](http://www.lichtundton.ch)

All prices are including VAT.

# MEETING ROOMS

## LAYOUT PLAN



**Ground Floor**



**1. Floor**



**Lobby/Foyer 1. Floor**

# TERMS & CONDITIONS

## RESERVATION, CANCELLATION, LIABILITY AND MORE...

### 1. Reservation

The reservation agreement and any changes regarding the services of the Hilton Garden Inn Zurich Limmattal hotel become binding when confirmed by the hotel and confirmed in writing by the contracting party.

### 2. Number of participants

The number of participants is determined in the reservation agreement. Deviations of more than 20% must be reported in writing at least 30 days before the event date. In case of a notification later than 30 days, the provisions of section 3.1 apply.

Note: The definitive number of participants must be communicated in writing no later than 3 working days before the event. This number of persons serves as the basis for billing. For guests who do not show up on the day of the event, the full costs will be charged after deducting a 5% tolerance.

### 3. Cancellation of reservation

In case of cancellations of definitively booked events that occur less than 60 days before the event date, the following cancellation costs will be charged:

Cancellation time /

Number of days before the event Hilton Garden Inn Zurich Limmattal entitlement

---

60 to 31 days before the event 25% of the assumed costs, but at least CHF 20 per person

---

30 to 11 days before the event 50% of the assumed costs, but at least CHF 35 per person

---

10 to 1 day before the event 75% of the assumed costs, but at least CHF 50 per person

---

Cancellation on the day of the event 100% of the assumed costs, but at least CHF 80 per person.

3.1 For definitive reservations of 40 or more persons (private) or 100 or more persons (companies), the Hilton Garden Inn Zurich Limmattal hotel requires a reasonable deposit. In case of cancellation of the definitively confirmed event, the following claims apply:

Cancellation time Hilton Garden Inn Zurich Limmattal entitlement

---

Up to 2 months before the event the advance payment will be refunded in full.

---

2 months or later before the event the advance payment will not be refunded.

---

3.2 Cancellations of individual hotel rooms (up to 10% of the booked hotel rooms) are free of charge up to 48 hours before the event. In case of later cancellation or non-arrival of a guest, the costs for one night will be charged. Short-term cancellations (2-29 days before the event) of more than 10% of the booked hotel rooms will be charged at CHF 100 per room.

3.3. Additional rooms can be cancelled free of charge up to 30 days before the event day. In case of later cancellation, the costs will be charged in full.

3.4. If the Hilton Garden Inn Zurich Limmattal hotel has reasonable cause to believe that the event jeopardizes the smooth operation, safety or reputation of the hotel, it is entitled to terminate the reservation agreement at any time without compensation.

### 4. Liability

The Hilton Garden Inn Zurich Limmattal hotel is only liable for intentional or grossly negligent contractual or non-contractual damage. The burden of proof lies with the guest. Any further liability (slight, moderate negligence; liability for causation) is waived.

### 5 Further provisions

5.1 The customer obtains all hospitality services from the Hilton Garden Inn Zurich Limmattal hotel.

5.2 Room changes remain at the discretion of the hotel, provided that this is reasonable for the organizer, taking into account the interests of the hotel.

5.3 Advertisements in the media (such as newspapers, radio, television, internet) indicating that the event will take place at Hilton Garden Inn Zurich Limmattal require prior written approval from the hotel.

5.4 Extensions of events beyond midnight are only possible after prior consultation. Any necessary permits remain reserved.

5.5 The guest is liable for all damages and losses caused by him or his guests, without the hotel Hilton Garden Inn Zurich Limmattal having to prove any fault on the part of the guest. Regarding items, clothes or materials brought in by the guest, organizer, speaker or third parties, any liability on the part of the hotel Hilton Garden Inn Zurich Limmattal is waived.

5.6 The organizer can dispose of material after an event in our hotel. The hotel reserves the right to charge a disposal fee for larger quantities.

5.7 For events (with or without overnight stays), the organizer is responsible for all necessary insurances (in particular for items brought in). The hotel Hilton Garden Inn Zurich Limmattal can demand proof of this insurance.

5.8 Payment terms: Hilton Garden Inn Zurich Limmattal is entitled to request full or partial payment in advance to the extent of the reservation, especially for large events or when the customer is not identical to the organizer. Without any other agreement, Hilton Garden Inn Zurich Limmattal will issue an invoice to the customer after the event. Invoices are payable within 30 days from the date of the invoice. The hotel does not send invoices abroad.

5.9 Applicable law/jurisdiction: Only Swiss law is applicable. Jurisdiction: Zurich.

Changes to the terms and conditions require written confirmation

# HOW TO FIND US

TRAVELLING WITH PUBLIC TRANSPORT AND PRIVATE CAR

## From Zurich Airport / St. Gallen:

Take the A1/A4/E41/E60 motorway until exit 58 "Dietikon". Follow Mutschellenstrasse to Landstrasse. Continue on Landstrasse until Kreuzäckerstrasse.

## BY PUBLIC TRANSPORTATION

### From Zurich main station:

There are regular train connections to Altstetten. At Altstetten station, take the Limmattal Bahn Line 20 (direction Killwangen Bahnhof) and get off at the Kreuzäcker stop.

The Hotel Idea is only a few steps away from the stop.

### From Baden station:

There are regular train connections to Spreitenbach-Killwangen. At Spreitenbach-Killwangen station, take the Limmattalbahn Line 20 (direction Altstetten Bahnhof) and get off at the Kreuzäcker stop. The Hotel Idea is only a few steps away from the stop.

Distance to the airport: 19.6 km

TAXI: 20 min (approx. CHF 100)

PUBLIC TRANSPORTATION: 40 min



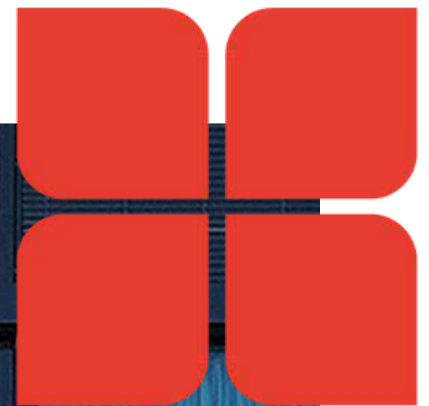
# CONTACT DETAILS

Hilton Garden Inn Zurich Limmattal  
Kreuzäckerstrasse 5  
CH-8957 Spreitenbach, Switzerland

[zurichlimmattal.hgi.com](http://zurichlimmattal.hgi.com)  
[zrhsp-salesadm@hilton.com](mailto:zrhsp-salesadm@hilton.com)

T: +41 56 404 40 40  
F: +41 56 404 40 49

  @HiltonGardenInnZurichLimmattal



**Hilton Garden Inn**