
DER TEUFELHOF BASEL

Das Gast- und Kulturhaus

Leonhardsgraben 47-49 | CH-4051 Basel
T +41 (0)61 261 10 10 | F +41 (0)61 261 10 04
info@teufelhof.com | www.teufelhof.com

Meetings at the Teufelhof



Content

The Teufelhof Basel	2
Premises	3
Design layouts	7
Meeting packages	8
Individual services	9
Hotel rooms and Falstaff Wine Shop	10
Small print	11

DER TEUFELHOF BASEL

Das Gast- und Kulturhaus

The Teufelhof Basel



Welcome

A hearty welcome to the unique hotel and cultural venue "Der Teufelhof Basel", where restaurants, hotels, theatres and art all under one roof, offer a unique combination. The venue is located in Basel's historic centre, in two integrated, historic townhouses from the 18th century. As a popular meeting place, the house links history and tradition with an artistically inspiring, modern and thus urbane setting.

Conferences and celebrations

Whether seminars, in the newly-built Shine & Dine room for example, business lunches or dinners, birthday celebrations, weddings, product presentations or other events, the Teufelhof Basel is an ideal venue for any kind of event, offering a creative and yet highly professional environment. Over 1,000 events each year serve as a reference.

Values

"For us, the customer is the focus of our daily work; the customer gives this venue its raison d'être. All of us, the 68 employees of the Teufelhof, attach great importance to pampering our guests. The well-being of our guests is our most important concern and we are all committed to ensuring that you feel genuinely comfortable staying with us." It's great to have you here!
Raphael Wyniger

DER TEUFELHOF BASEL

Das Gast- und Kulturhaus

Premises

Room Shine & Dine

The Shine & Dine is one of our greatest meeting room. It is excellently suited to all types of seminars, conferences and meetings. Lunches or dinners for up to 65 guests are possible in an intimate and pleasant setting too. This room gets its name from the daylight, which pervades the room.

Size 60m², Rectangular
Location Gallery Hotel ground floor



Seating arrangements

Block table max. 28 people
U-Shape max. 28 people
Concert max. 70 people
Classroom max. 36 people
Cabaret max. 24 people
Rows max. 65 people
Cocktail party max. 90 people

Theatre

The Theatre with its 110 seats is available for larger events, speeches and cocktail parties. Product presentations or company festivals with theatre productions can also be hold here. The floor is slightly sloping towards the stage.

Size 73m² (with stage)
Stage 21m²
(5.90m x 3.60m)
Location above the Atelier



Seating arrangements

Block table max. 30 people
U-Shape max. 30 people
Concert max. 110 people
Classroom max. 36 people
Cabaret max. 24 people
Rows max. 42 people
Cocktail party max. 110 people

DER TEUFELHOF BASEL

Das Gast- und Kulturhaus

Bel Etage locations

On the 1st floor of the Art Hotel you will find the rooms "Rudolf Linder", "Alex Fischer", "Gerber" and "Michael Baader". In this four interconnecting rooms we can accommodate up to 80 guests. All rooms can also be closed off individually for smaller groups. They offer space for 2 to 28 people and are suitable for business meals in an intimate setting and during the day for group work or workshops.

Size of the rooms

„Rudolf Linder“	29m ² quadrate
„Alex Fischer“	29m ² quadrate
„Gerber“	15m ² elongate
„Michael Baader“	19m ² elongate

Location Art Hotel, 1st floor

Seating arrangement

Depending on number of people and arrangement



Archaeological Cellar

An archaeological museum has been created between the foundations of the two city walls from the 11th and 13th centuries. Aperitifs for up to 120 people or a meal for up to 50 people can be arranged in this historic setting. This room offers as well a unique atmosphere for presentations up to 70 guests.

Shape 68m², elongate

Location below the Teufelhof

Seating arrangements

Block table	max. 26 people
Concert	max. 70 people
Cabaret	max. 35 people
Rows	max. 50 people
Cocktail party	max. 120 people



DER TEUFELHOF BASEL

Das Gast- und Kulturhaus

Atrium

The Atrium, located in the Basel old town and 50 steps from the Teufelhof away, is the perfect location for seminar, meetings and workshops in smaller scales. The room has a lot of day light, a cosy courtyard and a gallery, reachable with a spiral staircase. Aperitifs and team events can be organised here too. The Atrium is part of an historical building and has a separate entrance which offers you complete privacy in a unique and inspiring ambience.

Size	48m ² , elongate
Location	50 steps from the Teufelhof away

Seating arrangements

Block table	max. 15 people
U-Shape	max. 15 people
Concert	max. 30 people
Apéro	max. 50 people



Opus

Embedded in the depths of the historic building of the Teufelhof, the newly constructed room "Opus" offers space for various event possibilities. The name "Opus" stems from the Latin word for piece of art or masonry and promises both.

A historic masonry with wooden beams, furnished in a dynamic and tasteful way, a combination of modern and rustic. The centrepiece of Opus is the custom-made bar, decorated with old wooden wine boxes – a small piece of art.

The room is completed with unique paintings by the Carzaniga Gallery -all over a coherent and comfortable space.

Size	48m ² , elongate
Location	cellar of the Art Hotel

Seating arrangements

Block table	max. 30 people
U-Shape	max. 30 people
Concert	max. 50 people
Rows	max. 50 people
Apéro	max. 70 people



DER TEUFELHOF BASEL

Das Gast- und Kulturhaus

Stadtmauer Brauer

In the deep of the Teufelhof, along the old Basel City Walls from the 11th and 13th century, you will find the Stadtmauer Brauer factory. Here in this room, where the handcrafted beers are produced, you can organize smaller events such as aperitifs, speeches and tastings of all kinds. And maybe you would like to brew your very own beer? We offer brewing workshops too.

Size 48m², elongate

Location 2nd basement

Seating arrangements

Apéro max. 30 people

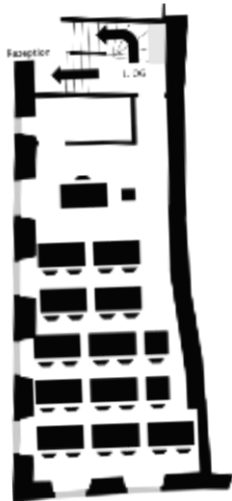


DER TEUFELHOF BASEL

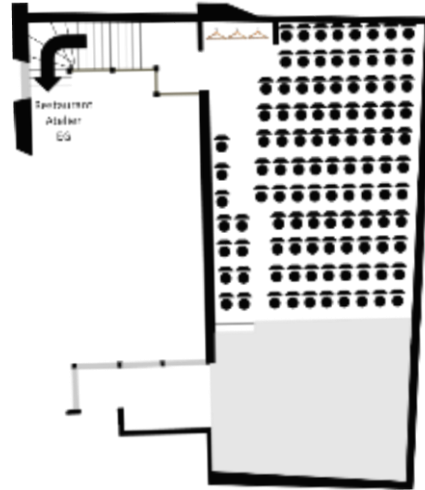
Das Gast- und Kulturhaus

Design layouts

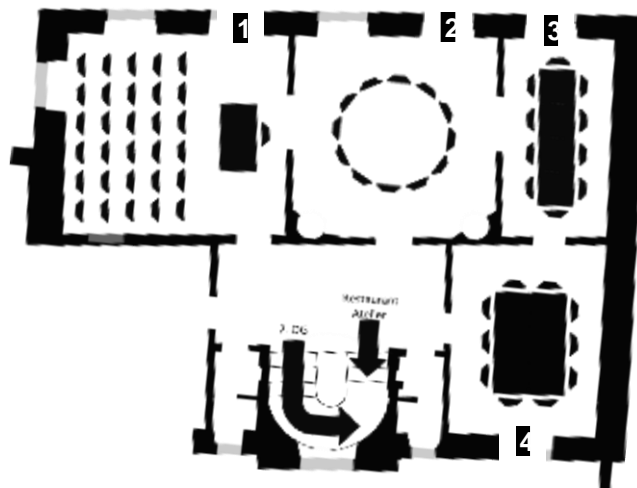
Room Shine & Dine



Theatre



Bel Etage locations



1 = „Rudolf Linder“

2 = „Alex Fischer“

3 = „Gerber“





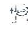

4 = „Michael Baader“

DER TEUFELHOF BASEL

Das Gast- und Kulturhaus

Meeting packages

We offer our packages starting from groups of 5 guests. They differ only by the choice of lunch: they all include:

-  the rent of the plenary room
-  basic technical equipment
-  mineral water (sparkling and flat) in the meeting room
-  coffee for self-service
-  2 coffee breaks in the morning and afternoon in the seminar room
-  lunch

If you choose the half day meeting package you have the choice between coffee break in the morning or in the afternoon.

Meeting package 1	per person	CHF	89.00
Half day meeting package 1	per person	CHF	79.00
with the dish of the day, salad and ice cream of the Atelier			
Meeting package 2	per person	CHF	99.00
Half day meeting package 2	per person	CHF	89.00
with a 3-courses menu of the Atelier			
Meeting package 3	per person	CHF	99.00
Half day meeting package 3	per person	CHF	89.00
with a lunch buffet (without dessert) of the Atelier (from 10 people upwards)			
Meeting package 4	per person	CHF	107.00
Half day meeting package 4	per person	CHF	97.00
with a lunch buffet (with dessert) of the Atelier (from 10 people upwards)			
Meeting package 5	per person	CHF	99.00
Half day meeting package 5	per person	CHF	89.00
with standing lunch (with dessert) of the Atelier (from 10 people upwards)			
Meeting package 6	per person	CHF	119.00
Half day meeting package 6	per person	CHF	109.00
with 3-courses business lunch of the Bel Etage			
Meeting package healthy	per person	CHF	99.00
Half day meeting package healthy	per person	CHF	89.00
with a light 3 courses menu of the Atelier			

Coffee break

In the meeting room with Nespresso coffee self-service, orange juice, fruit basket and in the morning with croissants and homemade cake in the afternoon.

Healthy Coffee break

In the meeting room with Nespresso coffee self-service, carrot juice, fruits, granola and nature yoghurt in the morning and with cranberry juice, fruit skewers, rye bread and cottage cheese in the afternoon.

DER TEUFELHOF BASEL

Das Gast- und Kulturhaus

Basic technical equipment

Beamer, screen or white wall, pin board, flip charts, conference telephone, presentation case, pads & pens and sound box on request and subject to availability.

WLAN is for our meeting guests available free of charge in the whole hotel.

Individual services

If you do not want to book a meeting package, you can create your meeting according to your wishes.

With groups up to 4 guests, we demand a minimal total consumption of CHF 400.00 for full day and CHF 300.00 for half day meetings.

Room rent without packages	1/1 day	1/2 day	evening
			from 19 o'clock on
Room Shine & Dine	CHF 390.00	CHF 310.00	CHF 200.00
Theatre	CHF 620.00	CHF 430.00	CHF 315.00
„Rudolf Linder“-Stube	CHF 300.00	CHF 220.00	
„Alex Fischer“-Stube	CHF 300.00	CHF 220.00	
„Gerber“-Stube	CHF 220.00	CHF 160.00	
„Michael Baader“-Stube	CHF 230.00	CHF 170.00	
Atrium	CHF 350.00	CHF 270.00	CHF 200.00
Opus	CHF 330.00	CHF 260.00	CHF 200.00

Coffee break in the meeting room per person **CHF 17.00**

Nespresso coffee self-service, orange juice, fruit basket and in the morning with croissants and homemade cake in the afternoon.

Lunch

Dine in our restaurant Atelier or in the fine dining restaurant Bel Etage and choose à la carte from our daily offer.

The following basic technical equipment is included in the room rent:

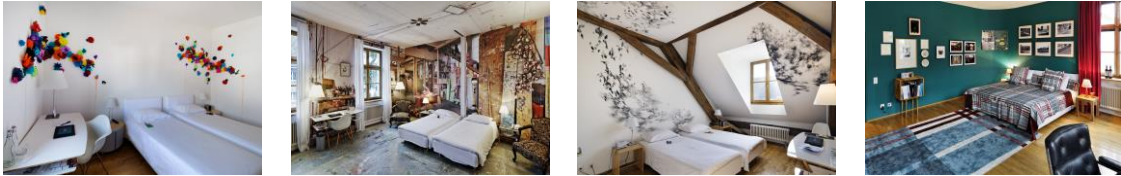
Beamer, screen or white wall, pin board, flip charts, conference telephone, presentation case, pads & pens and sound box on request and subject to availability.

WLAN is for our meeting guests available free of charge in the whole hotel.

DER TEUFELHOF BASEL

Das Gast- und Kulturhaus

Hotel rooms



Art Hotel

The Art Hotel has eight rooms and one suite, all of which are appointed as livable works of art. The rooms are redesigned by artists at regular intervals. The idea is that guests live in a work of art, instead of just viewing art in their rooms in the usual way. A play on words perhaps, but one that has great significance in terms of its implementation. Because: the intent is to empower the guest to experience art in a new context.

Gallery Hotel

The whole building complex of the Gallery Hotel acts as an exhibition space for art. Different exhibitions are on view for one year at a time. Like the Art Hotel, the Gallery Hotel is appointed with designer furniture.

It has more than twenty rooms, three suites and a junior suite, and offers all imaginable comforts. Free Wi-Fi, a buffet breakfast, and coffee and water in your room are a matter of course at both the Arts Hotel and the Gallery Hotel.

Please ask us regarding availability of hotel rooms and the best available rate.

Falstaff Wine Shop

The search for exceptional wines and products for our in-house cuisine has contributed greatly to the reputation of the Teufelhof. To ensure that Teufelhof guests benefit personally from this, a wine shop was established in the historic city walls offering homemade Teufelhof specialities or fine olive oils. Some 450 wines are on offer, including a number of trouvailles. The store is a tip for all wine connoisseurs and it does not have "closing hours". You can always access it via the hotel's reception.

DER TEUFELHOF BASEL

Das Gast- und Kulturhaus

Small print

For the hotel

Kindly note that

- there is no elevator in the Art Hotel but in the Gallery Hotel
- our rooms are available at 3 pm on busy check in and check out days
- our rooms do not have air conditioning
- you may leave your car a few minutes in our entrance to unload your luggage
- there is a parking at about three minutes walking distance from the hotel
- cancellation policy
 - within 14 days prior to arrival free of charge
 - within 13 until 7 days prior to arrival 50%
 - within 7 until 2 days prior to arrival 75%
 - within 1 day prior to arrival 100%

For the event and banqueting department

Kindly note that

- the reservation of a banquet or meeting is a contract
- cancellations of meetings will be charged
 - within 30 until 20 days prior to your event with 50% of the room rent
 - within 19 until 10 days prior to your event with 75% of the room rent
 - within 9 until 1 day prior to your event with 100% of the room rent and 80% of the meeting package
 - cancellation on the day of your event will be charged with 100% of the room rent and 100% of the meeting package
- cancellations of banquets will be charged
 - within 9 to 1 day prior to your event with 50% of the agreed menu price (minimum CHF 50.00 per person)
 - cancellations on the day of your event will be charged with 100% of the agreed menu price (minimum CHF 100.00 per person)
- we charge the last stated number of person
- we accept a reduction from numbers of person up to 10 % free of charge the day prior to your event
- a reduction from numbers of person over 10% will be charged as stated above
- no show à la carte groups (à la carte) from 6 persons without cancellation in due time will be charged as follows:
 - CHF 100.00 per person at the Atelier
 - CHF 150.00 per person at the Bel Etage

All of our prices are in Swiss francs and including 7.7% VAT.

Der Teufelhof Basel | Leonhardsgraben 47-49 | CH-4051 Basel
T +41 (0)61 261 10 10 | F +41 (0)61 261 10 04 | info@teufelhof.com | www.teufelhof.com

